

IEC Appliance Connector C14 with modular extended Components

Plug removal necessary for fuse replacement



Snap-In Version
6431.005X.XX
Appliance inlet
Switch
Appliance outlet

Snap-In Version

Snap-In Version

C14

70° C

**Description**

- Panel Mount:
Snap-In Version from front side
- 2 - 4 Functions:
Inlet Protection class I, Outlet Protection class I, Line switch 2-pole, Fuseholder for fuse-links 5 x 20 mm 1- or 2-pole
- Solder terminals 3.5 x 0.8 mm or quick connect terminals 6.3 x 0.8 mm
- Alternative: version with line filter [Felcom 54](#)

Approvals

- VDE License Number: 108162
- UL License Number: E103791
- CSA License Number: 38456

Characteristics

- Modular component selection
- Individual components soldered on a printed circuit board
- Plug removal necessary for fuse-link replacement
Fuse drawer meets requirements of medical standard IEC/EN 60601-1
The fuseholder is accessible from the equipment front
- Fully insulated from the rear
- Qualified for use in equipment according IEC/EN 60950

Other versions on request

- Line switch with other rocker marking

Weblinks

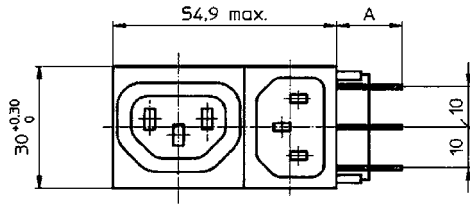
[Approvals](#), [RoHS](#), [CHINA-RoHS](#), [e-Store](#), [SCHURTER-Stock-Check](#), [Distributor-Stock-Check](#)

Technical Data

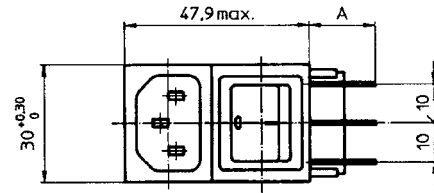
Ratings IEC	10A / 250VAC; 50Hz
Ratings UL/CSA	10A / 125/250VAC; 60Hz
Allowable Operation Temp.	-25 °C to 70 °C
Protection Class	Suitable for appliances with protection class I acc. to IEC 61140
Terminal	Solder terminals 3.5 x 0.8 mm or quick connect terminals 6.3 x 0.8 mm , tin-plated
Panel Thickness s	Snap-in: 1/1.2/1.5/2/2.5/3 mm
Material: Housing	Thermoplastic, black, UL 94V-0

Appliance-Inlet/-Outlet	C14 acc. to IEC/EN 60320-1 and F acc. to IEC/EN 60320-2-2, UL 498, CSA C22.2 no. 42 (for cold conditions) pin-temperature 70 °C, 10A, Protection class I
Fuseholder	1 or 2 pole, Shocksafe category PC2 acc. to IEC 60127-6, for fuse-links 5 x 20mm
Rated Power Acceptance @ Ta 23 °C	5 x 20: 2W (1 pole)/ 1.6W (2-pole) per pole
Power Acceptance @ Ta > 23°C	Admissible power acceptance at higher ambient temperature see derating curves
Line Switch	Rocker switch 2-pole, non-illuminated, IEC 61058-1 Technical details

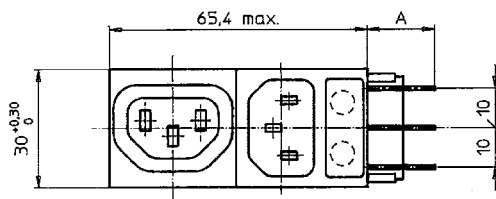
Dimensions



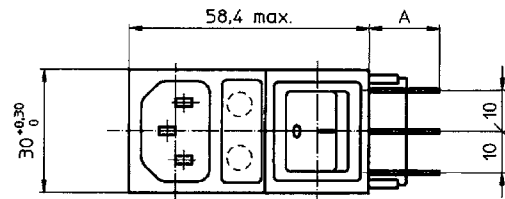
Variants 6421.005X.XX
Mounting hole: 53.6+0,2 x 27.6+0,2



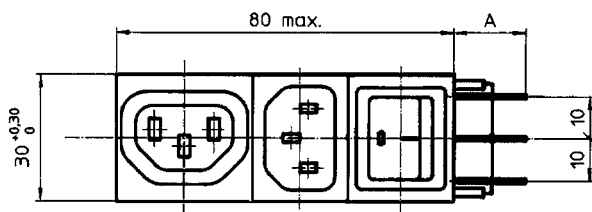
Variants 6422.005X.XX
Mounting hole: 46.7+0,2 x 27.6+0,2



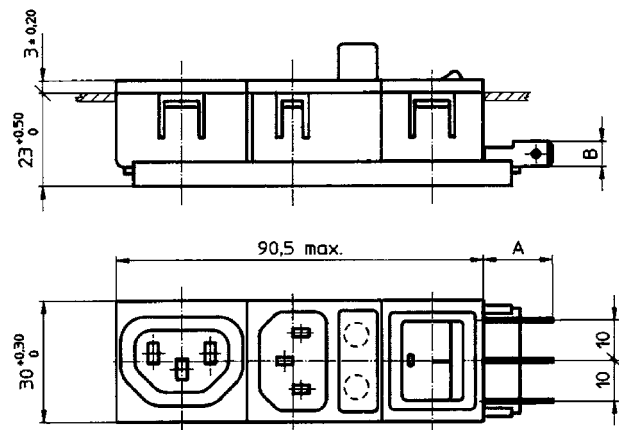
Variants 6423.0X5X.XX
Mounting hole: 65.5+0,2 x 27.6+0,2



Variants 6424.0X5X.XX
Mounting hole: 57+0,2 x 27.6+0,2



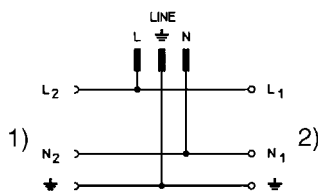
Variants 6431.005X.XX
Mounting hole: 80.1+0,2 x 27.6+0,2



Variants 6432.0X5X.XX
Mounting hole: 90.6+0,2 x 27.6+0,2

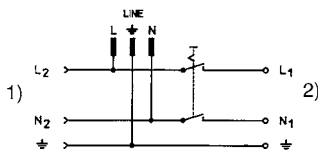
Diagrams

6421



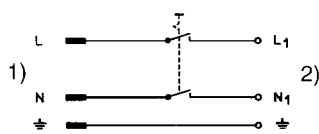
- 1) Load 2
- 2) Load 1

6431



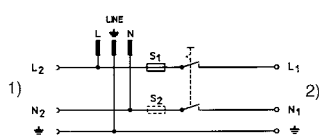
- 1) Load 2
- 2) Load 1

6422



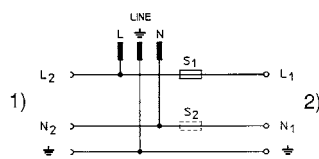
- 1) Line
- 2) Load 1

6432



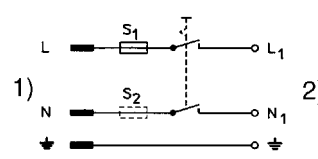
- 1) Load 2
- 2) Load 1

6423



- 1) Load 2
- 2) Load 1

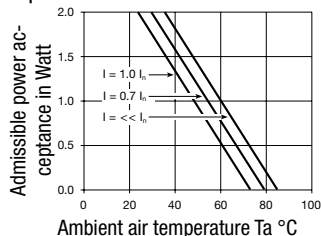
6424



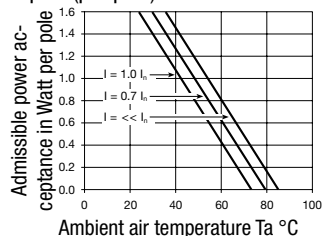
- 1) Line
- 2) Load 1

Derating Curves for Fuseholders

1-pole



2-pole (per pole)



Ordering instructions

64 XX.0X5X.XX

“Snap-in” panel thickness

10 = 1,0 mm

12 = 1,2 mm

15 = 1,5 mm

20 = 2,0 mm

25 = 2,5 mm

30 = 3,0 mm

Connection

51 = solder terminals 3,5 x 0,8 mm

53 = quick connect terminals 6,3 x 0,8 mm

Fuseholder 5 x 20 mm

00 = without fuseholder

01 = 1-pole

02 = 2-pole

Module combination

21 = Appliance inlet, outlet

22 = Appliance inlet, switch

23 = Appliance inlet, fuseholder, outlet

24 = Appliance inlet, fuseholder, switch

31 = Appliance inlet, outlet, switch

32 = Appliance inlet, fuseholder, outlet, switch

Base model

Packaging unit 10 Pcs

Accessory

Description



Cord retaining kits
Cord retaining strain relieve

Flat head, A	4700.0001
Flat head, E	4700.0005
Flat head, G	4700.0007

Ordering instructions

64 XX.0X5X.XX

"Snap-in" panel thickness

10 = 1,0 mm
12 = 1,2 mm
15 = 1,5 mm
20 = 2,0 mm
25 = 2,5 mm
30 = 3,0 mm

Connection

51 = solder terminals 3,5 x 0,8 mm
53 = quick connect terminals 6,3 x 0,8 mm

Fuseholder 5 x 20 mm

00 = without fuseholder
01 = 1-pole
02 = 2-pole

Module combination

21 = Appliance inlet, outlet
22 = Appliance inlet, switch
23 = Appliance inlet, fuseholder, outlet
24 = Appliance inlet, fuseholder, switch
31 = Appliance inlet, outlet, switch
32 = Appliance inlet, fuseholder, outlet, switch

Base model